



# Welcome!

It's the most wonderful time....of the year. Those are lyrics from a famous Christmas song by Andy Williams. He was one of my parents' favourite singers, and my home was filled with his songs, especially at Christmas.

I realise for you, Christmas may not be the most wonderful time of the year. It may actually be a dreaded season for you if it brings painful memories or accentuates loneliness. Or, for many, there are other holidays that are more meaningful. #cny

But let me suggest that regardless of your personal situation or preference, Christmas is the most wonderful time. It's not because of what may be happening in your life, but because of what happened.

I hope you will be encouraged today by your experience at church. I pray that you will feel a sense of welcoming community, a refreshed soul, and an ever-deepening reminder of what a Mighty God we have.

*Brett*

Are you new here?  
Come to our Newcomers Lunch  
Sunday, 7 January  
1:30pm, 10F Living Room



# ISLAND

LEADER: [Name]  
 EXECUTIVE DIRECTOR: [Name]  
 FINANCIAL DIRECTOR: [Name]  
 CHURCH OFFICERS: [Name]

# BOLD

**Bold Faith Fund** (Target \$1 Billion)

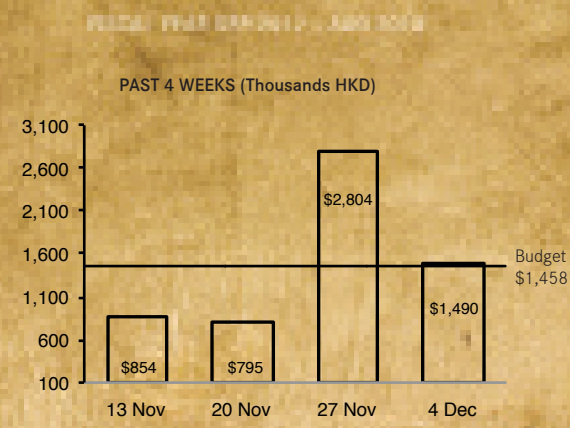
Received	\$109 M	Outstanding Pledge	\$27.8 M
----------	---------	--------------------	----------

Total Fund Received and Pledged \$136.8 M

**YEAR TO DATE (14 WEEKS)**

-15.2% deficit on giving

Budget	\$20.4M
Giving	\$17.3M
Variance	-\$3.1M



**WEEKLY**

Budget	1,458	1,458	1,458	1,458
Giving	854	795	2,804	1,490
Variance	(604)	(663)	1,346	32

**MESSIAH**  
 Hero Worship  
 December 10, 2017 9:30 am, 11:30 am, 3 pm, 5 pm  
 633 King's Road, 1/F, 2/F, 10/F

# HIGHLIGHTS

## CHRISTMAS EVE SERVICES

We would like to invite you, your family and friends to worship with us during our special Christmas Eve Services on Sunday, 24 December 2017. These special candlelight services will be held at our normal service times of 9:30 am, 11:30 am, 3 pm, and 5 pm.

## TODAY CHRISTMAS GIFT IDEAS

This is a special time of year as we join together with our families to celebrate the birth of Jesus and share in the beauty of Christmas traditions like gift-giving. Today and next week, we want to help you jumpstart your holiday shopping with several meaningful gift options:

### ISLAND ECC 2018 CALENDAR

Every year, our design team works to create a calendar for the upcoming year that carries meaning beyond simply scheduling. This year, the theme is "I Am the Beginning". Calendars can be purchased on 1/F, 2/F, and 10/F for \$50.

### EVERGREEN CD BY RENEW WORSHIP

What better way to usher in the Christmas season than with original music by Renew Worship, the worship team at Island ECC? Last year, the team released their Evergreen EP, and copies of this are available today in Quench on 1/F and on 10/F.

### QUENCH CHRISTMAS BOOK SALE

Special discounts are available on a wide selection of adult and children's titles while stock lasts. 1/F Quench and 10/F only.

## TODAY CHRISTMAS LOVE OFFERING

Every year, Island ECC blesses and advances God's work in Hong Kong and around the world. We do this through the Christmas Love Offering, which is one way that we partner with a wide variety of organisations and individuals involved in innovative, courageous and faithful ministry. Pray about what you will give this year; your offering can be placed in the red envelope provided.

## DEC 13 CHRISTMAS OUTREACH DINNER AT THE VILLAGE

Girls, we have created a special evening for you to reach out to your unchurched girlfriends and female family members this Christmas. With touching stories, amazing food and a joyful atmosphere, we hope to share the love of God with them. Limited tickets (\$200 for a set of two) are available for TODAY ONLY at the 1/F Connect Counter. 13 December, 6:30 pm Cocktail, 7:30 pm Dinner, on the 2/F.

## DEC 31 DEADLINE FOR FRIENDS OF HK CHARITY DONATIONS

Please note that donation cheques for Friends of Hong Kong Charities Inc. to be accounted for in 2017, they should be dated and handed in no later than 31 December. Anything received after this date will be considered as a donation for 2018.

## JAN 1 INDONESIAN CHRISTMAS CELEBRATION

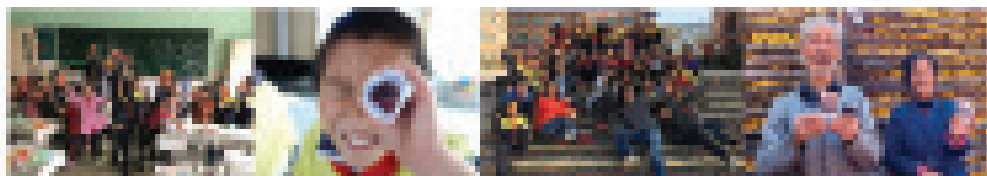
Please invite your Indonesian Domestic Helper to attend a special event designed just for them: "Celebrating Christmas and New Years!" The celebration begins at 10 am on the 10/F, and free tickets can be picked up at the Connect Counter on the 1/F today.

## JAN 19-20 EMULATE YOUTH CONFERENCE

The EMULATE Youth Conference is back! EMULATE is a conference designed to encourage and equip students, and create fun, vibrant opportunities to connect with God and others. Tickets are available today at the Early Bird rate of \$250 at Connect Counters and on 11/F. For more information, email youth@islandecc.hk or visit islandecc.hk/emulate.

## FEB 2-3 GLOBAL LEADERSHIP SUMMIT

Join us for the two-day Global Leadership Summit. GLS reaches 400,000 people from over 120 countries, and features inspiring speakers, both video cast and live, in Hong Kong. To join in and register visit glshk.org.



## CLASSES

To register and for more information on the following classes, go to [islandecc.hk/classes](http://islandecc.hk/classes).

## TODAY / DEC 17 BAPTISM CLASSES

If you're interested in being baptised, please plan to attend both baptism classes today and 17 December, 9:30 am - 11:00 am, 7/F Classroom. If you can't make it on Sundays, please attend both Wednesday classes, 13 and 20 December, 7:00 pm - 9:00 pm, 10/F Classroom. Sign up at [islandecc.hk/baptism](http://islandecc.hk/baptism).

## JAN 14 GROW DISCIPLESHIP COURSE LAUNCH

Want to take your walk with Christ to the next level? At GROW, participants learn how to establish a daily quiet time, read the Bible, fellowship with others, witness to non-believers and more. Find out more at the Launch Party, 1:30 pm - 3 pm, 10/F Worship Hall. Simple lunch will be served.

## OUTREACH

### DEC 17 SHANXI MISSION TRIP SHARING SESSION

"Completely touched and awed beyond words." This is how the team described their experience serving in Shanxi in November. Join them to hear their personal experiences and the ways God touched their lives and the lives of those they travelled to serve. Sunday 17 December, 3 pm - 5 pm, 11/F Classroom.

### MAR 3-11 MEN'S VIETNAM MISSION TRIP

Information Session: Today / Registration Deadline: 14 January

Partner with Men's Fraternity to share the gospel through words and actions to the closed country of Vietnam. The team is returning for the seventh year to build structures and relationships for a middle school. Join the Information Session today at 1:30 pm at the 11/F Small Group Room.

### APR 2-7 VIETNAM FAMILY MISSION TRIP

Registration Deadline: 17 December

Interested to serve together as a family? This will be our third year returning to Hanoi, Vietnam to serve orphans and partner with an elementary school for a day full of activities. The trip takes place 2 - 7 April, 2018. Email [go@islandecc.hk](mailto:go@islandecc.hk) for more information.

## OPPORTUNITIES

### COORDINATOR OF MINISTRY SUPPORT

We are looking for a friendly and energetic person with a heart to serve to join our Ministry Support team in providing administrative and logistical support for our Sunday services, ministry events and facility use. Fluency in both English and Cantonese are needed. Please email your CV and cover letter to [hr@islandecc.hk](mailto:hr@islandecc.hk)

## 10 DECEMBER 2017

## Hero Worship

*For to us a Child is born, to us a Son is given, and the government will be on His shoulders. And He will be called Wonderful Counsellor, **Mighty God**, Everlasting Father, Prince of Peace. (Isaiah 9:6)*

In the beginning was the Word, and the Word was with God, and the Word was God. He was with God in the beginning.

Through Him all things were made; without Him nothing was made that has been made.

In Him was **life**, and that life was the **light of all mankind**. The light shines in the darkness, and the darkness has not overcome it.

*John 1: 1-5*

## NEW TO ISLAND ECC

- MEET US AT THE CONNECT COUNTER
- VISIT OUR WEBSITE
- CONNECT WITH US:

<p><b>MEN</b> <a href="http://www.islandecc.hk">www.islandecc.hk</a></p> <p><b>WOMEN</b> <a href="http://www.islandecc.hk">www.islandecc.hk</a></p> <p><b>YOUTH</b> <a href="http://www.islandecc.hk">www.islandecc.hk</a></p> <p><b>CHILDREN</b> <a href="http://www.islandecc.hk">www.islandecc.hk</a></p> <p><b>TEENAGERS</b> <a href="http://www.islandecc.hk">www.islandecc.hk</a></p>	<p><b>VILLAGE</b> <a href="http://www.islandecc.hk">www.islandecc.hk</a></p> <p><b>PRAYERS</b> <a href="http://www.islandecc.hk">www.islandecc.hk</a></p> <p><b>LINKS</b> <a href="http://www.islandecc.hk">www.islandecc.hk</a></p> <p><b>CLASSES</b> <a href="http://www.islandecc.hk">www.islandecc.hk</a></p>	<p><b>INTOUCH</b> <a href="http://www.islandecc.hk">www.islandecc.hk</a></p> <p><b>ROAD SHOW</b> <a href="http://www.islandecc.hk">www.islandecc.hk</a></p> <p><b>FORUM</b> <a href="http://www.islandecc.hk">www.islandecc.hk</a></p> <p><b>BOOKS &amp;...</b> <a href="http://www.islandecc.hk">www.islandecc.hk</a></p>	<p>For all enquiries, please email <a href="mailto:info@islandecc.hk">info@islandecc.hk</a></p>
---	---	--	---

