

# Welcome!

As a kid, you sang about it. “If you’re happy and you know it, clap your hands”. And thanks to Pharrell, adults can now sing about it too: “Clap along if you feel like happiness is the truth”. (I’m still trying to figure out the “room without a roof” metaphor...)

Who doesn’t want more happiness? Most of us would easily say yes to an offer of greater happiness in our lives. And yet, in a recent study of Asian cities, Hong Kong ranked the lowest in happiness.

So how can that be changed? Are we to lower our expectations so that we are more easily fulfilled? Is happiness a culture-bound phenomenon that is valued and nurtured more in certain cultures than others? What does Jesus have to say about being happy?

Today we’ll have a look at scripture to understand more fully what it means to have a happy life.

Brett

## MINISTRIES

**MEN**  
[men@islandecc.hk](mailto:men@islandecc.hk)

**WOMEN**  
[women@islandecc.hk](mailto:women@islandecc.hk)

**YOUNG ADULTS**  
[youngadults@islandecc.hk](mailto:youngadults@islandecc.hk)

**YOUTH**  
[youth@islandecc.hk](mailto:youth@islandecc.hk)

**CHILDREN**  
[kidsclub@islandecc.hk](mailto:kidsclub@islandecc.hk)

**WORSHIP**  
[worship@islandecc.hk](mailto:worship@islandecc.hk)

**VOLUNTEER**  
[serve@islandecc.hk](mailto:serve@islandecc.hk)

**PRAYER**  
[prayer@islandecc.hk](mailto:prayer@islandecc.hk)

**CARE GROUPS**  
[caregroup@islandecc.hk](mailto:caregroup@islandecc.hk)

**CLASSES**  
[classes@islandecc.hk](mailto:classes@islandecc.hk)

**OUTREACH GLOBAL**  
[go@islandecc.hk](mailto:go@islandecc.hk)

**HONG KONG**  
[info@hopeofthecity.com](mailto:info@hopeofthecity.com)

**FILIPINO**  
[filipino@islandecc.hk](mailto:filipino@islandecc.hk)

**INDONESIAN**  
[indonesian@islandecc.hk](mailto:indonesian@islandecc.hk)

For other questions,  
please contact  
[info@islandecc.hk](mailto:info@islandecc.hk)

## PASTORS AND ELDERS

**ELDER BOARD**  
[elders@islandecc.hk](mailto:elders@islandecc.hk)

Rick Bates  
Brett Hilliard  
Brad Jordan

Charles Kim  
Ramon Maronilla  
Joseph Mohan

Gary Morris  
Ka Wong

**SENIOR PASTOR**  
Brett Hilliard  
[brett.hilliard@islandecc.hk](mailto:brett.hilliard@islandecc.hk)

**EXECUTIVE PASTOR**  
Rick Bates  
[rick.bates@islandecc.hk](mailto:rick.bates@islandecc.hk)

**PASTORS**  
Sherman Chau  
[sherman.chau@islandecc.hk](mailto:sherman.chau@islandecc.hk)

Albert Ng  
[albert.ng@islandecc.hk](mailto:albert.ng@islandecc.hk)

Executive Assistant  
Gina Charsley  
[gina.charsley@islandecc.hk](mailto:gina.charsley@islandecc.hk)

**EXECUTIVE DIRECTOR**  
Phillip Chin  
[phil.chin@islandecc.hk](mailto:phil.chin@islandecc.hk)

Tim LaTour  
[tim.latour@islandecc.hk](mailto:tim.latour@islandecc.hk)

Didi Wong  
[didi.wong@islandecc.hk](mailto:didi.wong@islandecc.hk)

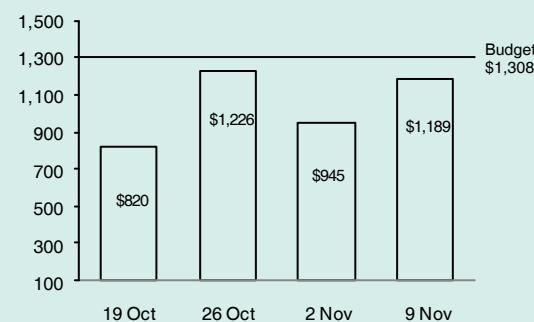
## GENERAL OFFERING

### YEAR TO DATE (10 WEEKS)

**-19.34% deficit on giving**

**YTD Budget** \$ 13.077M  
**YTD Giving** \$ 10.548M  
**YTD Variance** \$ -2.529M

### PAST 4 WEEKS (Thousands HKD)



Weekly Budget	1,308	1,308	1,308	1,308
Weekly Giving	820	1,226	945	1,189
Weekly Variance	-488	-82	-363	-119

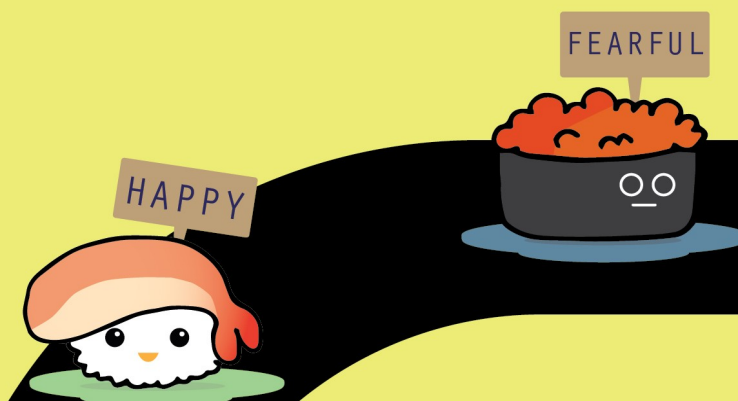
**GIVING TO ISLAND ECC** We encourage those who consider Island ECC their church home to prayerfully give a percentage of their income to the church on a regular basis.

Cheques payable to 'Island ECC Ltd.' for HK tax receipts or to 'Friends of Hong Kong Charities Inc.' for US citizens. More info at [islandecc.hk/give](http://islandecc.hk/give). Enquiries to [karen.kwok@islandecc.hk](mailto:karen.kwok@islandecc.hk).

## ISLAND ECC

8/F 633 King's Road, Quarry Bay, Hong Kong T 2864 9360 [info@islandecc.hk](mailto:info@islandecc.hk) [islandecc.hk](http://islandecc.hk) [f](#) [t](#) [i](#)

**ISLAND**  
EVANGELICAL COMMUNITY CHURCH



## RAW EMOTION

### Happiness

November 15, 2015 9.30am, 11.30am, 3pm, 5pm  
633 King's Road, 1/F, 2/F, 10/F

# HIGHLIGHTS

## TODAY BABY DEDICATIONS

We are delighted today to join with 2 families in the dedication of their children to the Lord:

- Theodore Hong Kien Tan, born 22 April 2015, to parents King & Soyoun (11.30am, 2/F)
- Amelia Faith Ng, born 12 November 2014, to parents Jeff & Nancy (11.30am, 10/F)

We warmly welcome all family and friends visiting for this occasion.

## TODAY NO 3PM AND 5PM SERVICE

In order to allow sufficient time for the Watoto Choir to set-up for their concerts, we have cancelled the two afternoon services next Sunday. While thrilled to have the Watoto children with us, we regret any inconvenience this may cause.

## TODAY NEWCOMERS LUNCH

If you're new to the church and want to know more about Island ECC, please join us for the Newcomers Lunch at 1.15pm on the 10/F. There is no cost for this lunch, but you do need a ticket to get in, so please pick one up today at the Connect Counter on your floor.

## TODAY “OH WHAT LOVE” WATOTO CHOIR CONCERT

For those who have tickets for performances later today, here are some things to note: Doors open at 4pm for the 4.30pm show and 7pm for 7.30pm. You must have your ticket with you, and all ticket holders must be present upon arrival (i.e. no saving blocks of seats). Seating is first come first served, with overflow seating on 2/F.

## TODAY FOOD DRIVE

Hope of the City is holding a food drive for Feeding Hong Kong over two Sundays. Bring your contributions to church and drop them in the boxes on 1, 2, 8 & 10/F. For a list of items needed, check out [www.hopeofthecity.com](http://www.hopeofthecity.com) – cooking oil and pasta are especially welcome.

## NOV 21 SPORTS FELLOWSHIP SCAVENGER HUNT

Sign up for the Sports Fellowship Scavenger Hunt. Teams of 6-8 people will solve clues and race to check points to win the prize! Tickets available at the Connect Counter TODAY!

## NOV 22 FAMILY THANKSGIVING: PARENT-CHURCH PARTNERSHIPS

Kids Club invites parents for a thanksgiving lunch, 1.30-2.45pm, 10/F Auditorium. Discover how the church and family come together to impact our children's spiritual growth. \$50/ adult. Kids free. Tickets available at 9/F Welcome Desk. Please RSVP by Nov 15.

## NOV 27 NIGHT OF PRAYER

Join us 7.30pm on 2/F to slow down, worship and remember how good God has been to us and our church. Doors open at 7pm.

## NOV 28 ARK 10TH ANNIVERSARY

Arkers! Get your tickets for the 10th anniversary dinner at 1/F Connect Counter today. \$120 each. Cash only please. See you, 6pm, as we celebrate 10 years of Ark love.

# CLASSES

REGISTER AT [ISLANDECC.HK/CLASSES](http://ISLANDECC.HK/CLASSES)

## NOV 29 CHRISTMAS RECOVERED

Join Martin Radford in this 3-week class to recover the Christmas story, to bring clarity to the events in the Gospels, to move beyond fanciful embellishments and so deepen our walk with



# OUTREACH

## TODAY FAMILY CNY CAMBODIA MISSION TRIP APPLICATION DEADLINE

We are looking for more families to join us in Cambodia to serve children from poor backgrounds. Trip dates are Feb 10-14, 2016. Email [go@islandecc.hk](mailto:go@islandecc.hk) to sign up.

## TODAY LEBANON MISSION TRIP INFO SESSION

Women's Ministries is leading a small team of 9 to Lebanon from March 24 to April 3 to serve Syrian refugees. Join us for the informational meeting, 2-3 pm, 8/F Living room.

## NOV 20 CHRISTMAS PRISON OUTREACH SIGN UP DEADLINE

Most English speaking inmates will not have any visitors during Christmas, so we are looking for volunteers to visit Tung Tau prison and show love in action on Dec 20 (9.30-11.30am). Email full name and HKID# to [go@islandecc.hk](mailto:go@islandecc.hk). Priority to men.

## NOV 22 “OH WHAT FAITH” UGANDA TRIP SHARING

Since 2008, teams have been visiting the poorest of the poor in Uganda and extending God's love to vulnerable children and women. Join us in this celebration of God's unfailing love and sharing the team's experience in slums and prison homes. 11/F Classroom, 1.30pm.

## NOV 29 CAMBODIA MISSION TRIP SHARING SESSION

How does God show His character as a God of Justice in Cambodia? What has been done in Cambodia to help human trafficking survivors know God and His love? Join us for our sharing session. 1.30-3pm, Living Room, 10/F.

# OPPORTUNITIES

## RECEPTIONIST/COORDINATOR VACANCY

We are looking to hire a full-time Receptionist/Coordinator for our church office. A cheerful friendly personality, good administrative skills, ability to multi-task, and excellent spoken and written English & Cantonese required. Email [hr@islandecc.hk](mailto:hr@islandecc.hk) with a cover letter and CV.

## STRING PLAYERS WANTED

Do you play violin, viola or cello? Our goal is to build a team of 10 string players for our Christmas Eve services at Queen Elizabeth Stadium. If you will be in town this Christmas Eve and play the violin, please send an email to [worship@islandecc.hk](mailto:worship@islandecc.hk).

# NEW TO ISLAND ECC

1

We are so glad that you're here today and would love to get to know you! Visit the Connect Counters on 1/F, 2/F and 10/F. Volunteers are there to answer any questions you might have about Island ECC and its different ministries and events.

2

## VISIT OUR WEBSITE



Check out [www.islandecc.hk](http://www.islandecc.hk), where you'll have access to information about all our ministries and events, as well as a broad spectrum of resources - including weekly blog posts and video podcasts of sermons.

Children's Ministries VBS (Vacation Bible School)



NOVEMBER 15, 2015

# Happiness

<sup>3</sup> Happy are the poor in spirit,  
For theirs is the kingdom of heaven.

<sup>4</sup> Happy are those who mourn,  
For they shall be comforted.

<sup>5</sup> Happy are the meek,  
For they shall inherit the earth.

<sup>6</sup> Happy are those who hunger and thirst for righteousness,  
For they shall be filled.

<sup>7</sup> Happy are the merciful,  
For they shall obtain mercy.

<sup>8</sup> Happy are the pure in heart,  
For they shall see God.

<sup>9</sup> Happy are the peacemakers,  
For they shall be called sons of God.

<sup>10</sup> Happy are those who are persecuted for righteousness' sake,  
For theirs is the kingdom of heaven.

Matthew 5:3-10